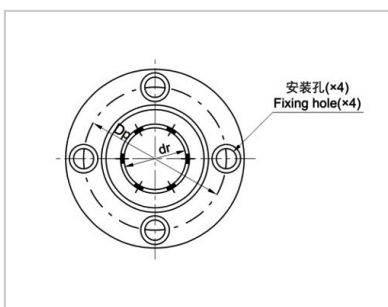
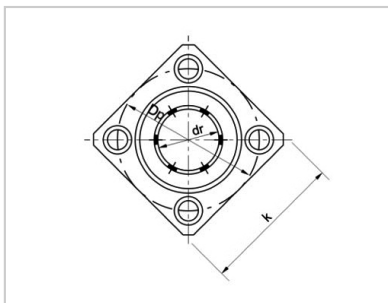


Flange Linear Bearings

LMFM-L、LMKM-L Series-**LMFM30LUU|LMKM30LUU**



Guided circular flange :	LMFM30LUU
Weight (g) :	680
Guided square flange :	LMKM30LUU
Weight (g) :	590
Nominal shaft diameter mm :	30

Main dimensions and tolerances :

dr mm :	30
dr μ m :	0/-12
D mm :	45
D μ m :	0/-19
L mm :	123
L μ m :	0/-400

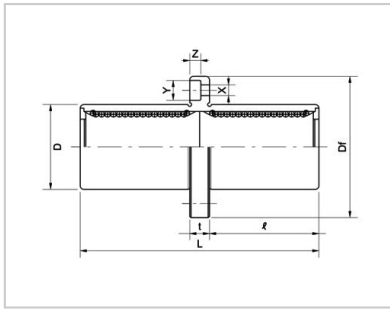
flange :

l mm :	56.5
Df mm :	74
k mm :	58
t mm :	10
Dp mm :	60
X mm :	6.6
Y mm :	11
Z mm :	6.1

Eccentricity μ m :	20
Verticality μ m :	20

Rated load :

Dynamic load C N :	2490
Static load Co N :	5490



: