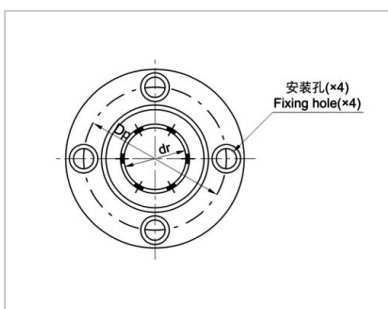
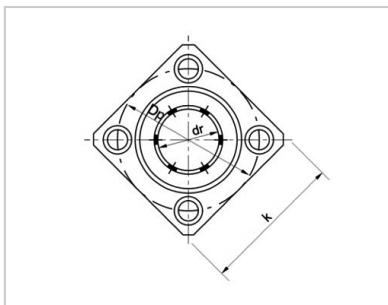


Flange Linear Bearings

LMFM-L、LMKM-L Series-**LMFM12LUU|LMKM12LUU**



Guided circular flange :	LMFM12LUU
Weight (g) :	110
Guided square flange :	LMKM12LUU
Weight (g) :	90
Nominal shaft diameter mm :	12

Main dimensions and tolerances :

dr mm :	12
dr μ m :	0/-10
D mm :	21
D μ m :	0/-16
L mm :	57
L μ m :	0/-300

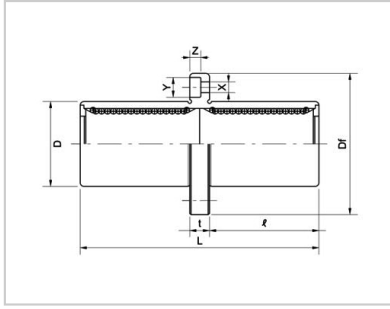
flange :

l mm :	25.5
Df mm :	42
k mm :	32
t mm :	6
Dp mm :	32
X mm :	4.5
Y mm :	7.5
Z mm :	4.1

Eccentricity μ m :	15
Verticality μ m :	15

Rated load :

Dynamic load C N :	813
Static load Co N :	1570



: